



NPWR
Climb Higher

Nevada P-20W Research Data System (NPWR)

2025 Research Grant Opportunity

September 27, 2024

Kristen Dwyer, NPWR Manager
Office of Workforce Innovation

Agenda

- Overview of NPWR
- Current Data
- Research Projects
- Portal
- Next Steps

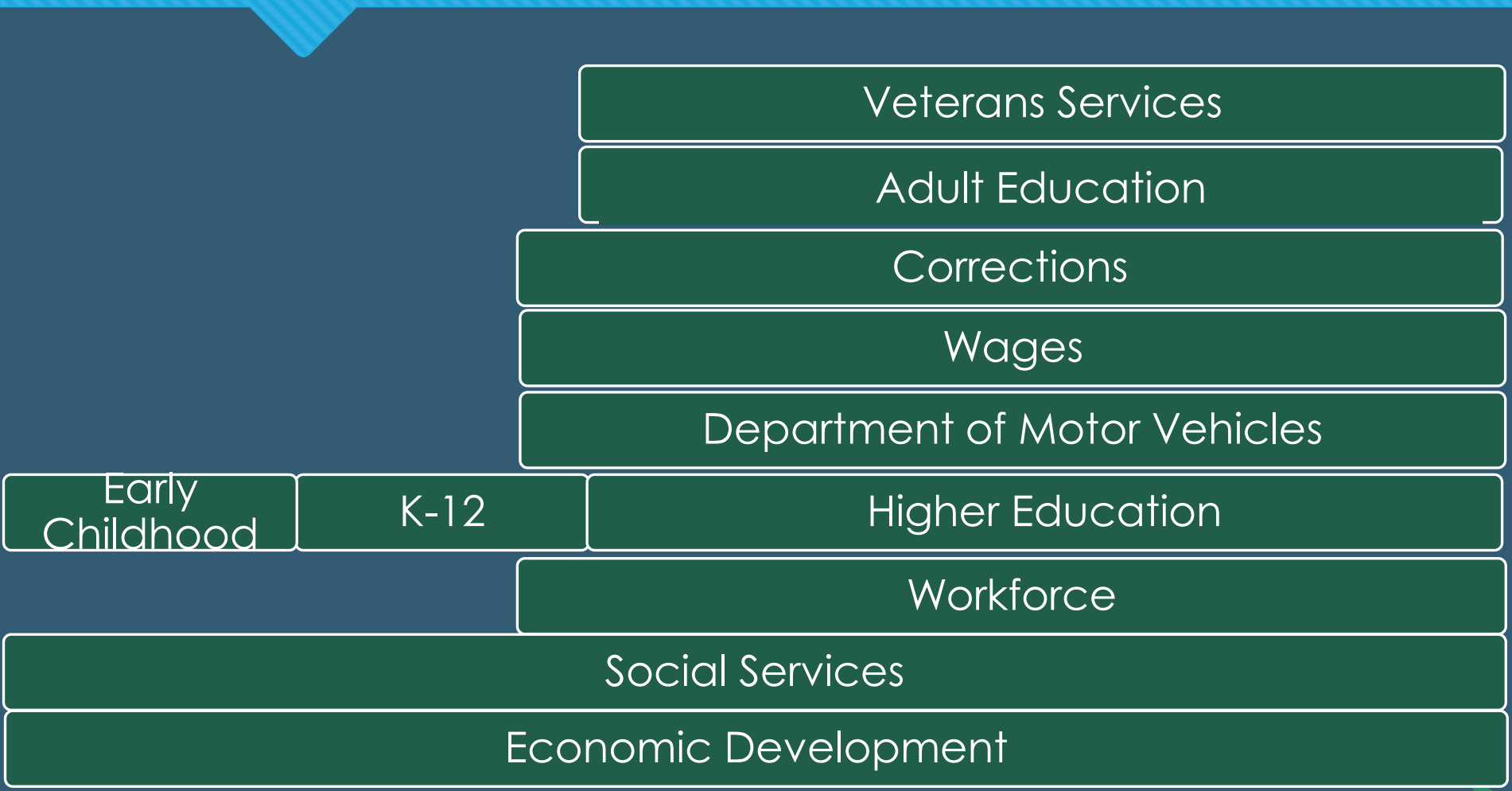
Overview

- About
 - Implemented to link data from K-12 and post secondary education into the workforce
- Security
 - NPWR is not a centralized data warehouse, partner agencies host and control their data (federated architecture)
 - Data delivered in the Research Portal is removed after 10 days
 - Data delivered through the system is de-identified
 - Data in the system does not contain PII
 - Access to the system requires Authentication and Authorization
 - Agency governance and oversight

Why NPWR

- Academic, Government and Industry Partnerships to move Nevada forward through data
- Create better outcomes for Nevadans
- Today represents the opportunity to help build and drive the Nevada Research Agenda
 - Holistic approach across education, workforce, social services domains
 - Longitudinal data solution to drive data driven policies solutions for Nevada

Partners



Early
Childhood

K-12

Higher Education

Veterans Services

Adult Education

Corrections

Wages

Department of Motor Vehicles

Workforce

Social Services

Economic Development

Current Data

- Department of Education
 - Demographics
 - Early Childhood
 - Graduate & Non-Graduate
 - Career and Technical Education
 - Assessment
 - Foster Care
 - FRL & Direct Certification: SNAP, TANF, Medicaid, Homeless, Military Status
 - Courses
 - IEP
 - Migrant Status
 - *Teacher (road mapped)*
 - Zip code
- Adult Education
 - Adult Education & Family Literacy Act Performance Data

Current Data

- System of Higher Education
 - Student Enrollment
 - Outcomes
 - Demographics
- Department of Employment, Training and Rehabilitation
 - Wage Data
 - Title I
 - Title III
- Department of Motor Vehicles
 - Data for matching only
- Division of Welfare and Supportive Services
 - Early Childhood
 - Demographics
 - First Language
 - Home Language

Data Schedule



Data Update

- Adult Education: Quarterly
- DETR: Quarterly
- NDE + DWSS: Semi-annual
- NSHE: Biannual
- Future Partners: TBD

Data Latency

- Adult Education: 1 Quarter
- DETR: 1 Quarter
- NDE + DWSS: 1 School Year
- NSHE: 1 Semester latent
- Future Partners: TBD

Onboarding Data

- Department of Corrections
- Department of Veteran Services
- Department of Business & Industry –
Apprenticeship
- Department of Health and Human Services

NPWR Research Grants

- To support research studying Nevada's most challenging policy problems in the areas of workforce development, economic diversification, and education
- Data Dictionary:
<https://mynpwr.nv.gov/NPWR/DataDictionary>
- Due as one PDF to Kristen Dwyer by 5 pm on Friday, October 25, 2024.

NPWR Research Grants

- Eligible applicants are researchers, scholars and/or academics located in and residing in the State of Nevada or working directly for a State of Nevada department; such applicants may represent or be a part of public and private organizations, institutions, and entities interested in asking research questions that address policy problems facing Nevada using NPWR as the evidence-based data-driven research tool.
- Timeline: November 2024-June 2025
- The maximum amount funded will be: up to \$50,000 for a group/consortium project with multiple researchers and/or students (preference given to include students in the project); up to \$4,000 for an individual faculty member with no students, just as self; up to \$3,000 for an individual student at the Master/PhD level.

2023 NPWR Research Grants:

○ Workforce and Economic Development

- The Brookings Mountain West's project, The Gender Gap in Nevada: A K-12, Higher Education, and Workforce Study will explore the gender gap in Nevada and propose public policy interventions to improve educational and workforce outcomes;
- The Kenny Guinn Center for Policy Priorities and the University of Nevada, Las Vegas (UNLV) Center for Business and Economic (CBER) Research's project An Analysis of Nevada's Pre- and Post-Pandemic Labor Force Participation Rate will identify and evaluate factors contributing to Nevada having the 3rd largest decrease in labor force participation following the pandemic;
- The University of Nevada, Reno's (UNR) University Center for Economic Development's (UCED) project Examination of the Relationship between Workforce Development and Housing, Education and Childcare Services, and Healthcare Services will explore how labor force barriers impact workforce and economic development and business creation, retention, and expansion abilities.

○ Education

- The Lincy Institute's project Nevada K-12 Performance and Implications for Economic Diversification will evaluate the differentiating factors between Nevada's highest and lowest performing schools and districts in terms of on-time graduation rates, performance on standardized tests, and college-going rates;
- UNLV's Center for Research, Evaluation, and Assessment's (CREA) project Piloting School Funding Equity: How the Enactment of Senate Bill 178 Impacted Student Outcomes After Graduation explores how Nevada's student funding pilot program impacted students post-secondary and vocational outcomes;
- Dr. Megan Rauch Griffard from UNLV's Department of Educational Psychology and Higher Education's project Dissecting the Educator Talent Pipeline and Educators' ROI in Nevada will focus on whether CTE certificates in education concentrations lead to eventual employment in education, seek to understand how long NSHE education majors take to earn their desired degree by educational attainment level, and how the wages of educators compare to other workers with comparable education and experience in Nevada by educational attainment level.

○ Students

- Anna Dreibelbis, a UNLV law and doctorate student, for her project Assessing Career Readiness Gaps in Nevada to understand what the gaps are in soft skill development in CTE programs across Nevada.
- Curtis L. Cobbins, a doctorate student, for his project Causes of Innovation Engineering Management Failure in Workforce Development Within the Nevada System of Higher Education to understand how strong the correlation is, if any, between employee analysis of skills gap alignment and the role of innovation engineering management.

2024 NPWR Research Grants:

○ Workforce and Economic Development

- Assessing Workforce Availability and Associated Skill Sets Needed to Close Gaps in the Value Network and Supply Chain of Nevada's Healthcare Industry Sector; University Center for Economic Development; University of Nevada, Reno
- The Potential Economic and Fiscal Benefits of Connecting Over 30,000 Disconnected Youth in Nevada to Education or Employment by 2030; Consultant to/representing Workforce Connections, Southern Nevada's Local Workforce Development Board
- AI-Enhanced Education in Nevada and its Transformative Impact on Workforce Development, Employment Prospects, and Tomorrow's Job Market Proficiencies ; Center for Migration, Demography and Population Studies; University of Nevada, Las Vegas
- Care Workers in Nevada: A Crisis Now and in the Future; The Lincy Institute
- The Dynamics of Labor Force Participation – A Statewide Analysis and Survey in a Post-Pandemic Nevada; Kenny Guinn Center for Policy Priorities & Center for Business and Economic Research; University of Nevada, Las Vegas

○ Education

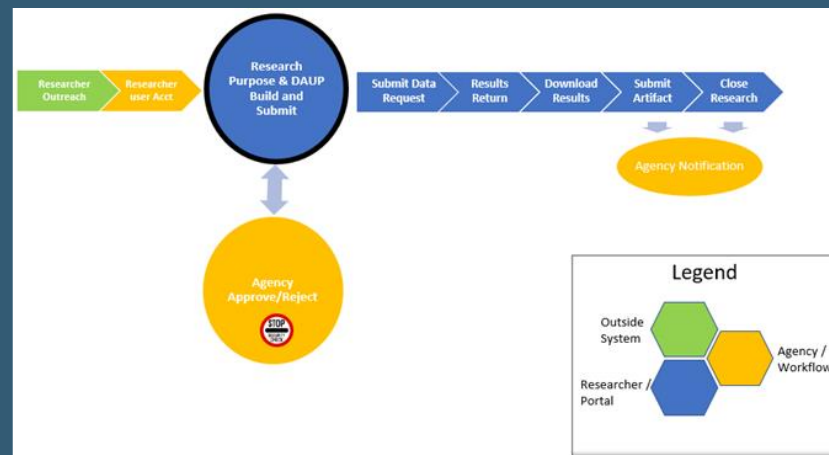
- Strengthening Nevada's PK-20 Teacher Pipeline: An Assessment to Meet Workforce Projections; Clark County Education Association
- An Exploratory Study of Two Postsecondary Policies and Student Outcomes in Nevada; Department of Educational Psychology, Leadership, and Higher Education; University of Nevada, Las Vegas
- Nevada Goes to College: A Statistical Portrait of Higher Education Enrollment and Degree Attainment of Minoritized Students in Field of Education; College of Education and Human Development; University of Nevada, Reno

○ Students

- An Examination of Novice Teacher Career Persistence Trends; Elizabeth Hofschulte Collins, MS; Doctoral Fellow in Teacher Preparation and Retention, National Institute for the Advancement of Education; University of Nevada, Las Vegas

NPWR Portal

- Contact Kristen to receive login to portal
- <https://npwr.nv.gov/Research> and <https://mynpwr.nv.gov/>
- Governance Structure



NPWR Research Portal



NPWR
Climb Higher

My Research Portal

[Home](#) » [My Research](#)

Password Expires in 51 D

[My Research](#) «

[Data Dictionary and Selection Tool](#)

[DRT](#)

[Help & Training](#)

Research Purpose:

Tasks

Account

Research

Team

Data

Documents

Notifications

Contacts



Step 1: Account



Step 2: Team Members



Step 3: Research Purpose



Step 4: Research Purpose Submission



Step 5: DAUP



Step 6: DAUP Management



Step 7: Data Requests



Step 8: Data Packages



Step 9: Data Package Approval



Step 10: Data Results



Step 11: Research Documents



Step 12: Finish

NPWR Research Portal



NPWR
Climb Higher

My Research Portal

Home » My Research

Password Expires in 51

My Research «

Data Dictionary and
Selection Tool

DRT

Help & Training

Research Purpose:

Tasks

Account

Research

Team

Data

Documents

Notifications

Contacts



Step 1: Account



Step 2: Team Members



Step 3: Research Purpose



Step 4: Research Purpose Submission



Step 5: DAUP



Step 6: DAUP Management



Step 7: Data Requests



Step 8: Data Packages



Step 9: Data Package Approval



Step 10: Data Results



Step 11: Research Documents



Step 12: Finish

NPWR Research Portal



NPWR
Climb Higher

My Research Portal

Home » My Research

Password Expires in 51

My Research «

Data Dictionary and
Selection Tool

DRT

Help & Training

Research Purpose:

Tasks

Account

Research

Team

Data

Documents

Notifications

Contacts



Step 1: Account



Step 2: Team Members



Step 3: Research Purpose



Step 4: Research Purpose Submission



Step 5: DAUP



Step 6: DAUP Management



Step 7: Data Requests



Step 8: Data Packages



Step 9: Data Package Approval



Step 10: Data Results



Step 11: Research Documents



Step 12: Finish

Next Steps

- Due Date
 - Application due on Friday, October 25, 2024 at 5:00 pm
- NPWR Research Forums
 - December 3 at UNR
 - December 10 at UNLV
- Contact
 - Kristen Dwyer,
kdwyer@decr.nv.gov
 - Visit
<https://npwr.nv.gov/>



NPWR
Climb Higher